

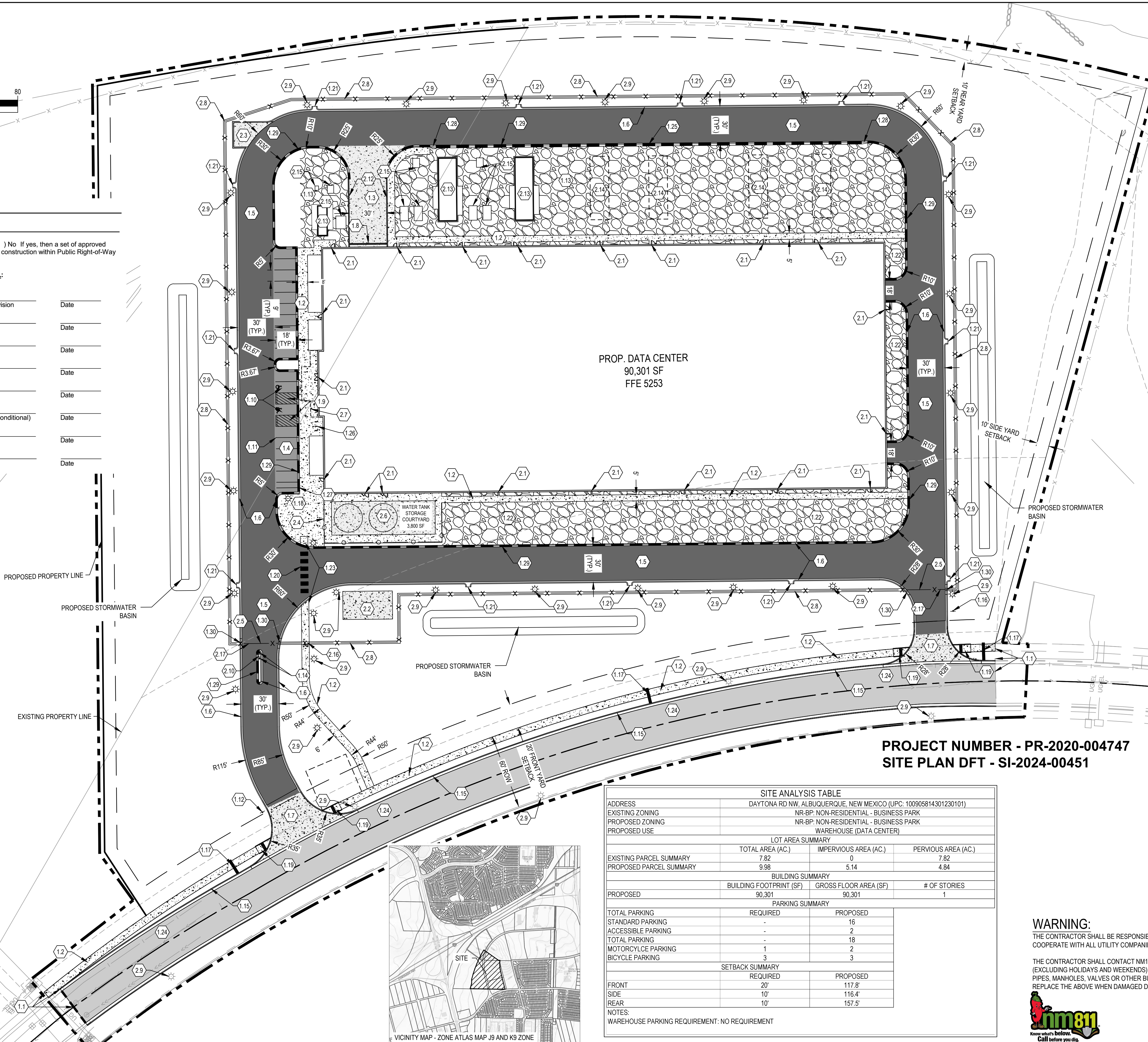
PROJECT NUMBER: \_\_\_\_\_

Application Number: \_\_\_\_\_

Is an Infrastructure List required? ( ) Yes ( ) No If yes, then a set of approved DRC plans with a work order is required for any construction within Public Right-of-Way or for construction of public improvements.

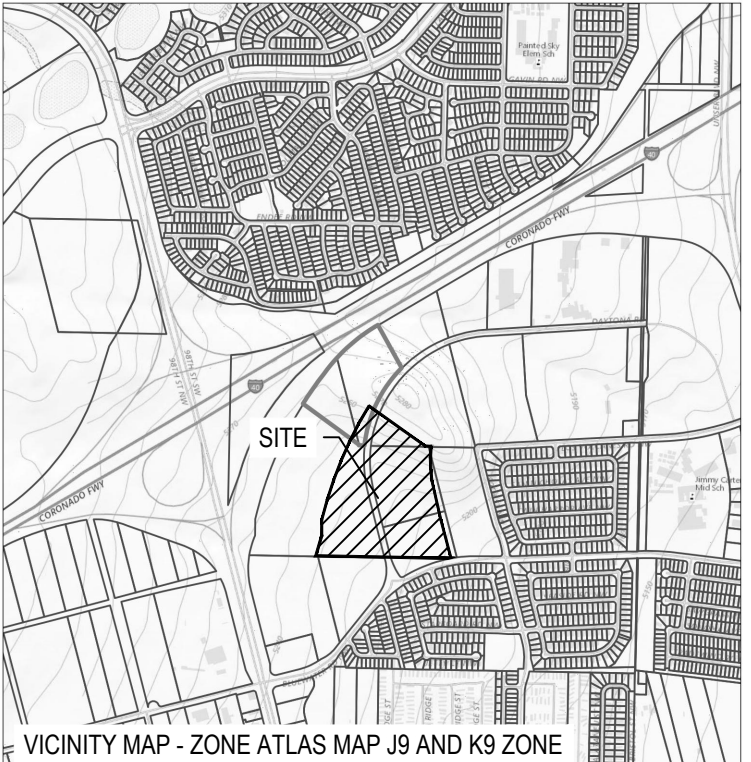
DFT SITE DEVELOPMENT PLAN APPROVAL:

Traffic Engineering, Transportation Division	Date
ABCWUA	Date
Parks and Recreation Department	Date
Hydrology	Date
Code Enforcement	Date
*Environmental Health Department (conditional)	Date
Solid Waste Management	Date
Planning Department	Date



PROJECT NUMBER - PR-2020-004747  
SITE PLAN DFT - SI-2024-00451

SITE ANALYSIS TABLE			
ADDRESS	DAYTONA RD NW, ALBUQUERQUE, NEW MEXICO (UPC: 100905814301230101)		
EXISTING ZONING	NR-BP: NON-RESIDENTIAL - BUSINESS PARK		
PROPOSED ZONING	NR-BP: NON-RESIDENTIAL - BUSINESS PARK		
PROPOSED USE	WAREHOUSE (DATA CENTER)		
LOT AREA SUMMARY			
	TOTAL AREA (AC.)	IMPERVIOUS AREA (AC.)	PERVIOUS AREA (AC.)
EXISTING PARCEL SUMMARY	7.82	0	7.82
PROPOSED PARCEL SUMMARY	9.98	5.14	4.84
BUILDING SUMMARY			
	BUILDING FOOTPRINT (SF)	GROSS FLOOR AREA (SF)	# OF STORIES
PROPOSED	90,301	90,301	1
PARKING SUMMARY			
	REQUIRED	PROPOSED	
TOTAL PARKING	-	16	
STANDARD PARKING	-	2	
ACCESSIBLE PARKING	-	18	
MOTORCYCLE PARKING	1	2	
BICYCLE PARKING	3	3	
SETBACK SUMMARY			
	REQUIRED	PROPOSED	
FRONT	20'	117.8'	
SIDE	10'	116.4'	
REAR	10'	157.5'	
NOTES:	WAREHOUSE PARKING REQUIREMENT: NO REQUIREMENT		



**LEGEND**

- PROPERTY BOUNDARY
- LOT LINE
- EASEMENT LINE
- SETBACK LINE
- RIGHT OF WAY LINE
- EXISTING EASEMENT LINE
- SECTION LINE
- QUARTER LINE
- CURB AND GUTTER
- TIP OUT CURB AND GUTTER
- STANDARD DUTY ASPHALT PAVEMENT
- HEAVY DUTY ASPHALT PAVEMENT
- DAYTONA ROAD ASPHALT PAVEMENT
- CONCRETE SIDEWALK
- CONCRETE PAVEMENT
- GRAVEL SURFACING/SHOULDERING
- SCREEN WALL
- PERIMETER FENCE

**NOTES**

- SEE SHEET C-002 FOR ADDITIONAL PROJECT NOTES.
- ALL DIMENSIONS ARE TO FACE OF CURB UNLESS OTHERWISE NOTED
- PROPOSED IMPROVEMENTS ADJACENT TO ALBUQUERQUE DATA CENTER PROJECT SITE ARE SHOWN. REFERENCE DAYTONA RD EXPANSION PLANS (SEPARATE PROJECT) FOR MORE INFORMATION. COORDINATE WITH DAYTONA RD EXPANSION PROJECT TO PROVIDE SMOOTH TRANSITION AT TIE-IN POINTS.
- DESIGNED BY OTHERS ITEMS SHOWN FOR REFERENCE ONLY. EXACT LOCATION, DETAIL, AND DESIGN BY OTHERS. COORDINATE WITH PROJECT PARTNERS TO OBTAIN RELATED CONSTRUCTION DOCUMENTS/DRAWINGS.

**KEYNOTES**

- STANTEC DESIGN ITEMS
  - MATCH EXISTING
  - CONCRETE SIDEWALK - SEE DETAIL 2/C-804
  - CONCRETE PAVEMENT - SEE DETAIL 1/C-804
  - STANDARD DUTY ASPHALT PAVEMENT - SEE DETAIL 3/C-804
  - HEAVY DUTY ASPHALT PAVEMENT - SEE DETAIL 4/C-804
  - 6" CURB AND GUTTER - SEE COA DWG. 2415A
  - CONCRETE DRIVEWAY APRON - SEE DETAIL 1/C-801
  - CONCRETE TRENCH DRAIN - SEE DETAIL 3/C-802
  - ADA ACCESSIBLE AISLE - SEE DETAIL 1.2,5,6/C-801
  - ADA VAN ACCESSIBLE STALL W/ SIGN - SEE DETAIL 1.2,4,5,6/C-801
  - 4" WHITE PAINT STRIPE (TYP.) - SEE DETAIL 2/C-801
  - STOP SIGN - SEE DETAIL 1.5/C-801
  - GRAVEL SURFACING - SEE DETAIL 5/C-802
  - BOLLARD - SEE DETAIL 3/C-801
  - STANDARD CURB AND GUTTER - SEE COA DWG. 2415A
  - "EMERGENCY VEHICLES ONLY" SIGN - SEE DETAIL 1.5/C-801
  - SIDEWALK CULVERT - SEE COA DWG. 2236
  - SEATING AREA - SEE LANDSCAPE PLANS
  - SIDEWALK WITH TRUNCATED DOMES - SEE COA DWG. 2446, 2441, & 2430
  - CROSSWALK - SEE DETAIL 2/C-801
  - CONCRETE CURB CUT - SEE DETAIL 2/C-802
  - ROCK MULCH - SEE LANDSCAPE PLANS
  - ADA CURB RAMP - SEE COA DWG. 2440, 2241, 2442, 2443, & 2444
  - DAYTONA ROAD ASPHALT PAVEMENT - SEE COA DWG. 2407
  - MOUNTABLE CURB AND GUTTER - SEE COA DWG. 2415B
  - BIKE RACK - SEE LANDSCAPE PLANS
  - MOTORCYCLE PARKING
  - 5' CURB TRANSITION
  - TIP OUT CURB AND GUTTER
  - FENCE CURB CUT - SEE GRADING PLAN
- DESIGN BY OTHERS - SEE NOTE 4
  - DOOR LOCATION WITH STOOP - SEE ARCHITECTURAL/STRUCTURAL PLANS
  - MEDIUM VOLTAGE SWITCH GEAR - SEE ARCHITECTURAL/STRUCTURAL/ELECTRICAL PLANS
  - TRASH/RECYCLING ENCLOSURE - SEE ARCHITECTURAL PLANS
  - SCREEN WALL/ARCHITECTURAL BUILDING ELEMENT - SEE ARCHITECTURAL PLANS
  - 30' ROLLING GATE - SEE ARCHITECTURAL PLANS
  - STRUCTURAL PAD FOR WATER TANKS - SEE ARCHITECTURAL/STRUCTURAL PLANS
  - CANOPY LOCATION - SEE ARCHITECTURAL/STRUCTURAL PLANS
  - 6' PERIMETER SECURITY FENCE - SEE ARCHITECTURAL PLANS
  - LIGHT POLE - SEE ARCHITECTURAL/ELECTRICAL PLANS
  - CARD READER PEDESTAL - SEE ELECTRICAL PLANS
  - COLUMN - SEE ARCHITECTURAL/STRUCTURAL PLANS
  - RETAINING WALL - SEE ARCHITECTURAL/STRUCTURAL PLANS
  - PROPOSED GENERATOR - SEE ELECTRICAL PLANS
  - FUTURE GENERATOR - SEE ELECTRICAL PLANS
  - UTILITY EQUIPMENT PAD - SEE ELECTRICAL PLANS
  - PEDESTRIAN GATE - SEE ARCHITECTURAL PLANS
  - KNOX BOX ON GATE - SEE ARCHITECTURAL PLANS
  - STREET LIGHTING - SEE ARCHITECTURAL/ELECTRICAL PLANS

**WARNING:**  
THE CONTRACTOR SHALL BE RESPONSIBLE FOR CALLING FOR LOCATIONS OF ALL EXISTING UTILITIES. THEY SHALL COOPERATE WITH ALL UTILITY COMPANIES IN MAINTAINING THEIR SERVICE AND/OR RELOCATION OF LINES.

THE CONTRACTOR SHALL CONTACT NM11 (811 OR 1-800-321-2537) AT LEAST 2 FULL BUSINESS DAYS IN ADVANCE (EXCLUDING HOLIDAYS AND WEEKENDS) FOR THE LOCATIONS OF ALL UNDERGROUND WIRES, CABLES, CONDUITS, PIPES, MANHOLES, VALVES OR OTHER BURIED STRUCTURES BEFORE DIGGING. THE CONTRACTOR SHALL REPAIR OR REPLACE THE ABOVE WHEN DAMAGED DURING CONSTRUCTION AT NO COST TO THE OWNER.

**Stantec**  
733 MARQUETTE AVE  
SUITE 1000  
MINNEAPOLIS, MN 55402  
WWW.STANTEC.COM

CLIENT:  
**OPPIDAN**  
Group of Experts, creator of oppidan

**ALBUQUERQUE 10 MW DATA CENTER**  
DAYTONA RD NW  
ALBUQUERQUE, NEW MEXICO 87121

PROJECT TITLE

DATE	DESCRIPTION	ISSUE NO.
01/08/2024	PRE APPLICATION SUBMITTAL	0
03/08/2024	PRB SUBMITTAL	1
03/20/2024	BID SET	2
05/10/2024	DFT RESUBMITTAL	3
06/03/2024	PERMIT SET	4
08/07/2024	SIDEWALK UPDATE PER ABCWUA	5

CERTIFICATION:

PROJECT NO.: 193806697  
DWN BY: HKK    CHKD BY: JRA    APPD BY: CMR  
ISSUE DATE: 08/01/2024  
ISSUE NO.: 5  
SHEET TITLE: SITE PLAN  
SHEET NO.: C-101